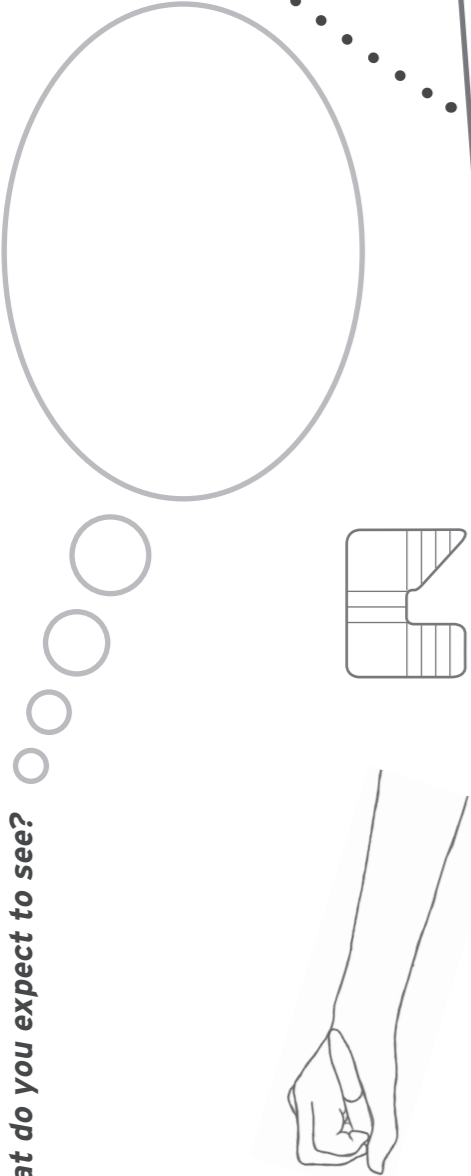


**Welcome!** This guide has been created for you to read as you walk through the exhibition. There are lots of different things to notice in a gallery. Why not take a few minutes to write down your thoughts before you look at the show...

**What do you expect to see?**



**We Believe Communication is a Basic Human Need, 2015-2017**

These drawings show fantastical spaces filled with **screens and blinking lights.**

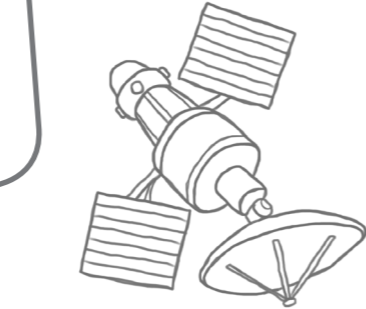


**Slogans, 2015-2017**

The Slogans are designed to sell the **possibilities of space**, becoming **visual poems** when drawn by hand.

**Get on Da Spaze Buz, 2015-2017**

Can you imagine **travelling to space** on a bus?



**This is not a Satellite, This is an Educated Nation, 2015-2017**

A series of satellite designs show how fast technology is developing as people all over the world use **satellites to stay connected.**

## ALEKSANDRA MIR: SPACE TAPESTRY



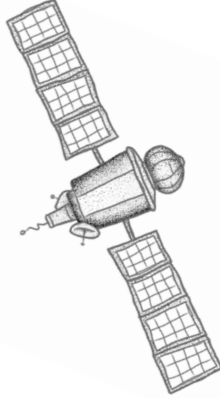
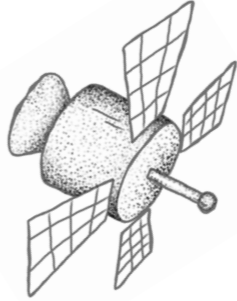
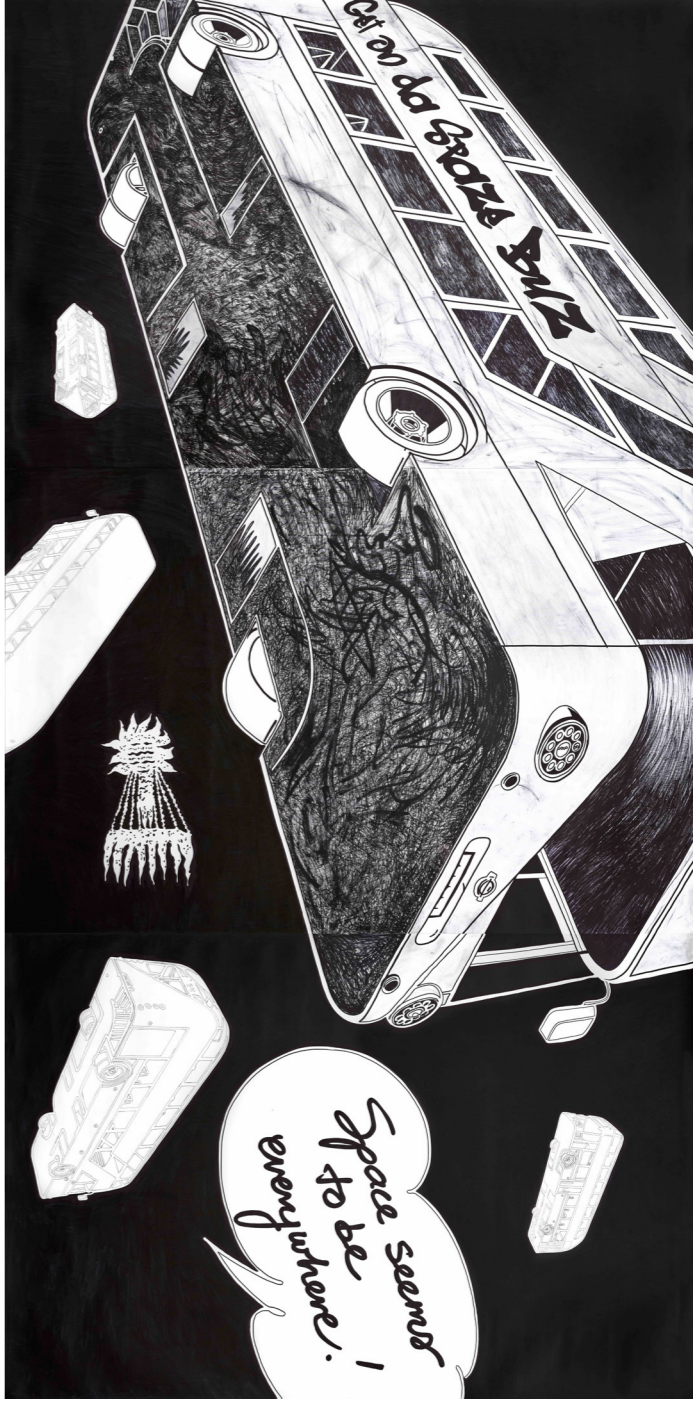
**Sharpie**



30 Pembroke Street  
OX1 1BP  
+44 (0) 1865 722733  
[www.modernartoxford.org.uk](http://www.modernartoxford.org.uk)  
Designed by Sara Lowes and Elie Nixon

## ACTIVITY SHEET

## MODERN ART OXFORD



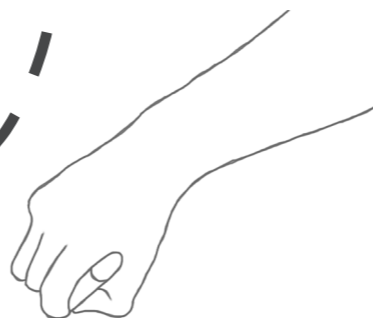
START



## About Aleksandra Mir

Aleksandra Mir is an international contemporary artist living in London. Aleksandra has made many large scale projects all about **space exploration**.

Aleksandra works with a team to draw work **collectively** in her studio using Sharpie marker pens.



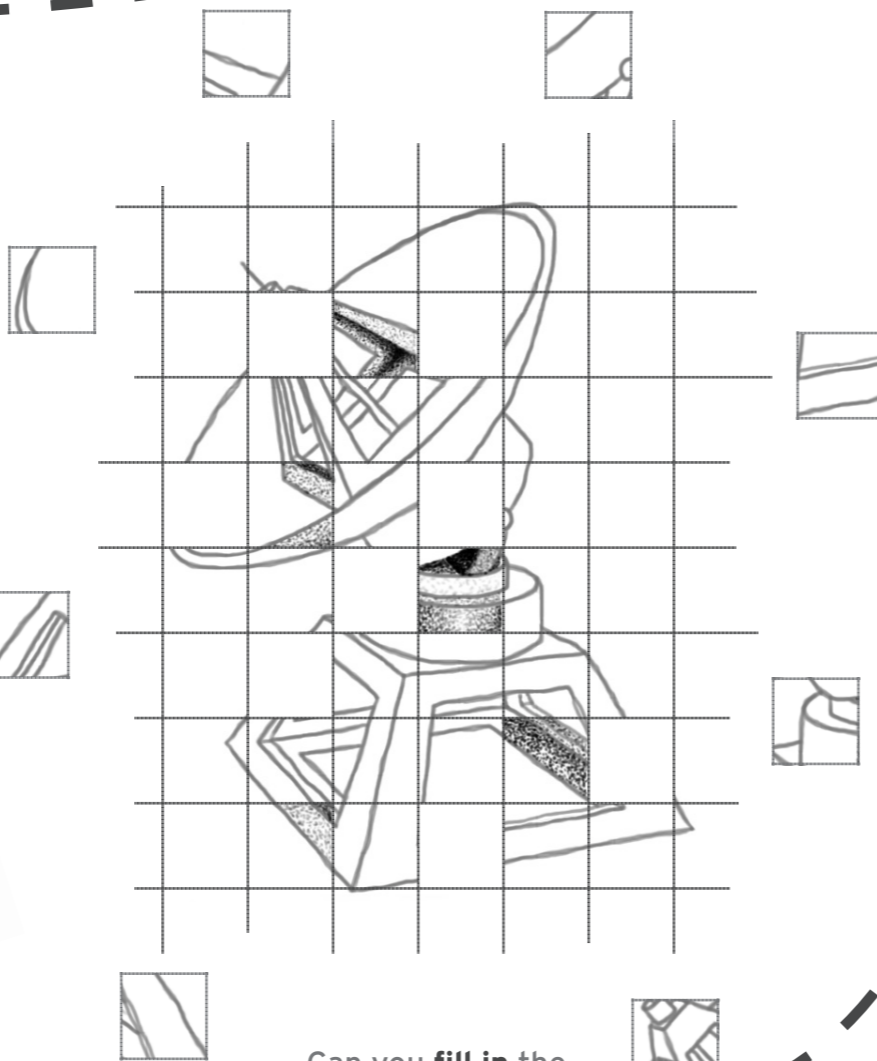
## About Space Tapestry

*Space Tapestry* is inspired by the 1000 year old **Bayeux Tapestry**, which shows one of the first known impressions of **Halley's Comet**. *Space Tapestry* took 3 years to make. Aleksandra worked with 25 young artists to complete the giant drawings that tell a visual story of **satellites** and **human space travel**.

Aleksandra Mir recognises how important it is to make art to share and learn about different subjects such as **science and technology**. She uses Sharpie pens to create her work, exploring different ways of mark making using the pen and just like a paintbrush to create **different washes of colour**.



Halley's Comet, is made of a **large lump of ice, dust and gas**. It looks a bit like a smudged star and is 9 miles long! It takes **76 years** to orbit around the sun, making an appearance in the night sky when it is closest to the sun and becomes a bright star with a magnificent tail.

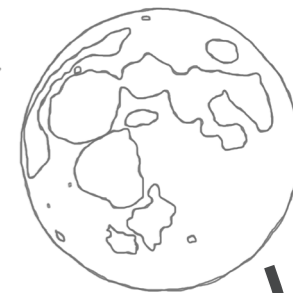
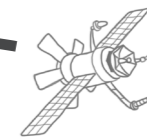


Can you **fill in** the empty squares with the **missing pieces**?

## About Satellites

Satellites orbit the earth and other planets in the **solar system**. The **moon** is a natural satellite, but we also have artificial satellites. These have been built by people and launched into space.

Did you know that there are **over 2000** satellites in space? They allow us to use our **mobile phones**, **observe the Earth's surface** and **predict the weather**. We all rely on space every day.



"Space is woven into all our lives and affects everyone on Earth"

## Mission Patch

Missions to the Space Station have **patches** designed for them, like this one from the **Apollo programme**, designed to land humans on the earth and bring them safely home.

Each patch has different **symbols** that tell us about each mission. Think of a mission you would like to work on and then **design your very own mission patch!**



## What do you think now?

Now you have seen the exhibition, **what do you think? Are your thoughts different** to before you looked around the show?

Take a few moments to **write or draw something** and then check to see what you did at the beginning.



FINISH